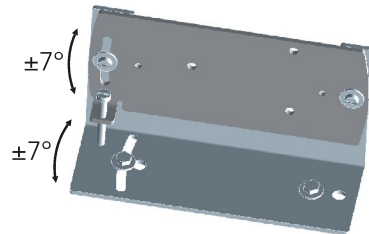




# Alignment jig

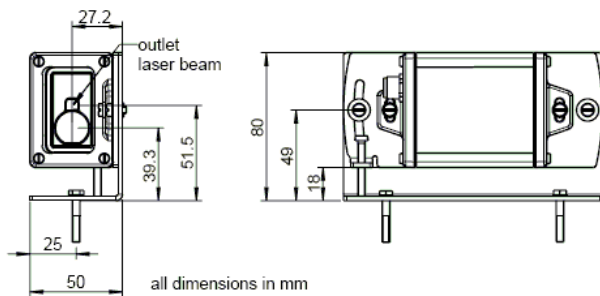
Item No. 500213



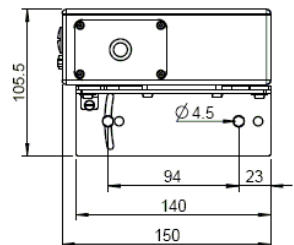
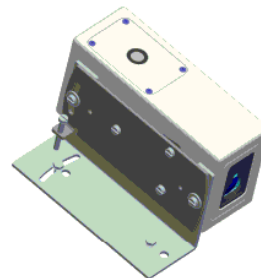
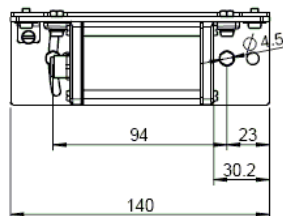
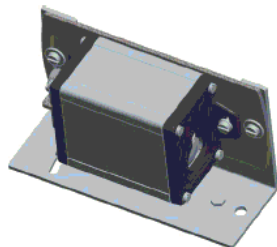
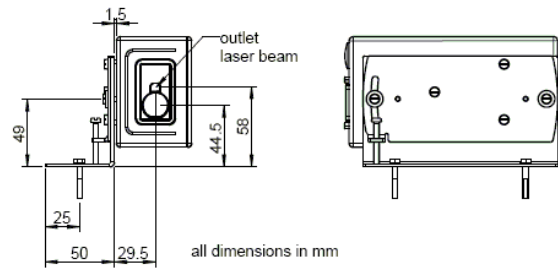
With the alignment jig it's easy to adjust the laser beam to the requested measuring target. It's made of stainless steel and can be used for any type of Laser Distance Sensor EDS, DLS or FLS.

It can be used for distances up to 50 meters.

### Dimensions for the EDS



### Dimensions for the DLS/FLS



### Order information

Item No.	Description	Packaging unit
500213	Alignment jig Adjusting angle $\pm 7^\circ$ in two directions Material: stainless steel (V2A) Recommended for distances up to 50m Applicable for EDS/DLS/FLS	1 piece